

CL 043

Tracteur à sellette 3 essieux 3-Achser Schlepper



Catalogue technique / Technischer Katalog

Marque et type / Mark und Typ

Mercedes ACTROS 2651

Transmission / Getriebe

6 x 4

Poids à vide / Eigengewicht

16'800 kg

Charge utile / Nutzlast

9'200 kg

Poids total / Gesamtgewicht

26'000 kg

Longueur / Länge

7.35 m

Hauteur / Höhe

4.00 m

Largeur / Breite

2.55 m

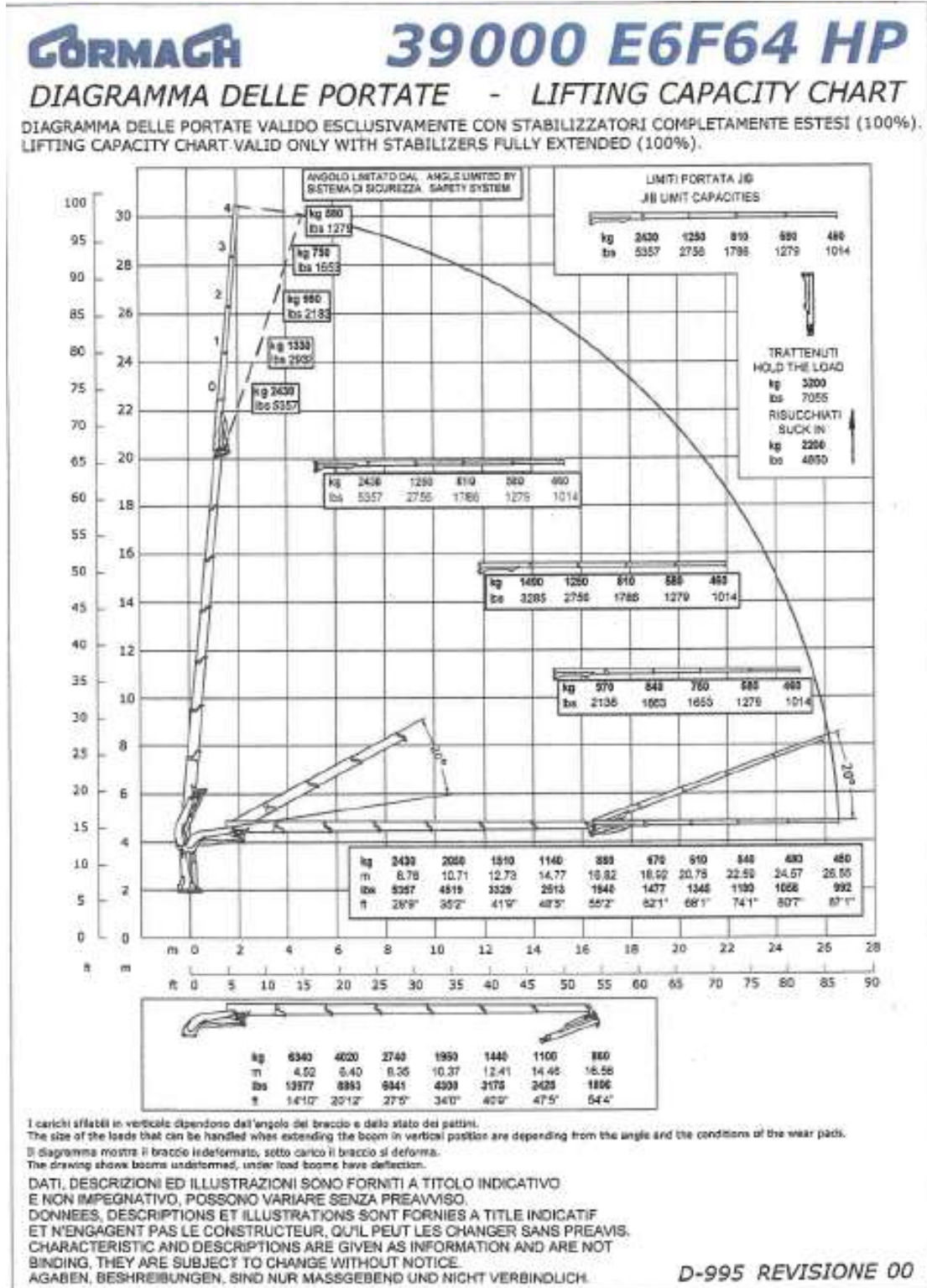
Hauteur du châssis / Höhe Fahrgestell

1.30 m

Norme d'émission / Emissionsnorm

EURO 6

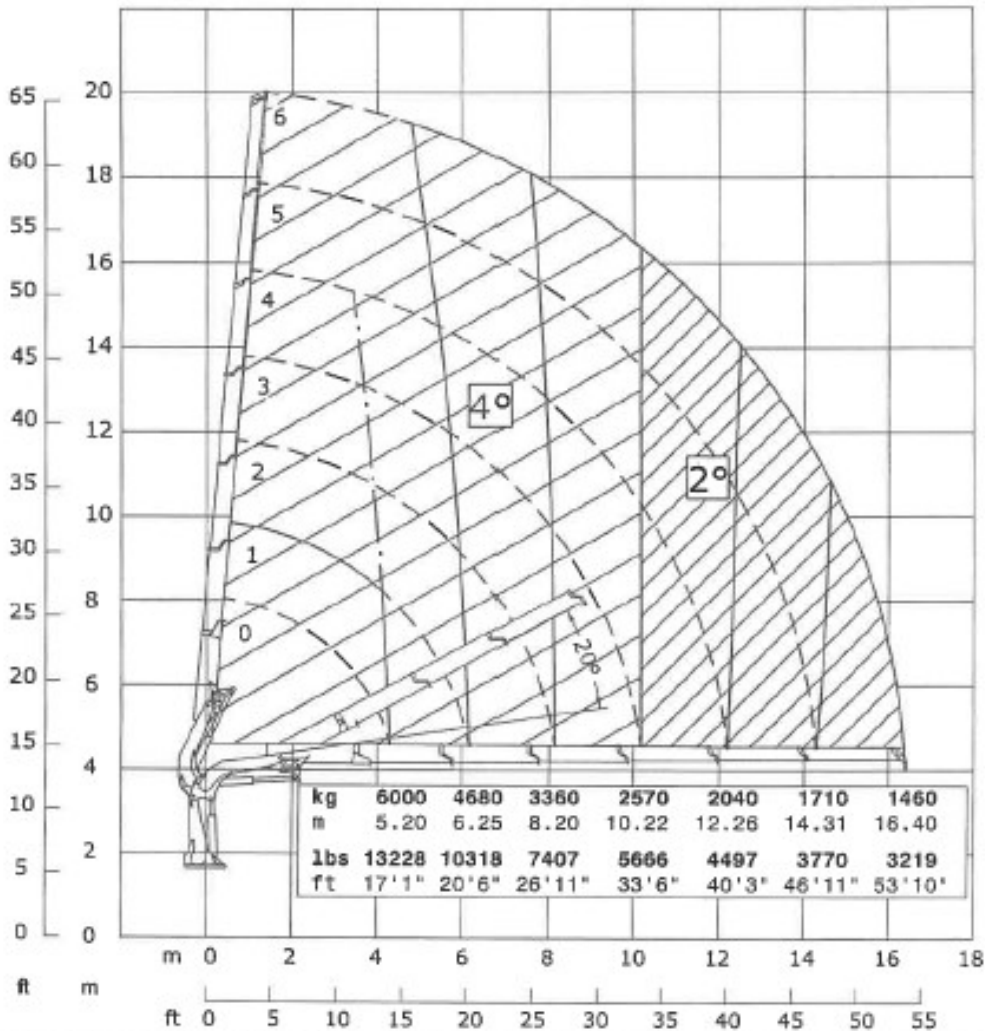
CL 043



CL 043

GORMAGH **39000 E6 HP**
DIAGRAMMA DELLE PORTATE - LIFTING CAPACITY CHART
CON ARGANO BW1500 WITH WINCH BW1500

DIAGRAMMA DELLE PORTATE VALIDO ESCLUSIVAMENTE CON STABILIZZATORI COMPLETAMENTE ESTESI (100%).
 LIFTING CAPACITY CHART VALID ONLY WITH STABILIZERS FULLY EXTENDED (100%).



Tiro max diretto 1500 daN Max pull one line 1500 daN Tir max direct 1500 daN Direkter hochtzug 1500 daN
 Massa bozzello e rinvii 60 kg Block and pulleys 60 kg Masse poulie et renvois 60 kg Korbmasse und umlenkung 60 kg

Il diagramma mostra il braccio indeformato, sotto carico il braccio si deforma.
 The drawing shows boom undeformed, under load booms have deflection. --- --- CON CIRCUITO FULL POWER (OPTIONAL)
 WITH FULL POWER CIRCUIT (OPTIONAL)

DATI, DESCRIZIONI ED ILLUSTRAZIONI SONO FORNITI A TITOLO INDICATIVO
 E NON IMPEGNATIVO, POSSONO VARIARE SENZA PREAVVISO.
 DONNEES, DESCRIPTIONS ET ILLUSTRATIONS SONT FORNIES A TITRE INDICATIF
 ET N'ENGAGENT PAS LE CONSTRUCTEUR, QU'IL PEUT LES CHANGER SANS PREAVIS.
 CHARACTERISTIC AND DESCRIPTIONS ARE GIVEN AS INFORMATION AND ARE NOT
 BINDING, THEY ARE SUBJECT TO CHANGE WITHOUT NOTICE.
 ANGABEN, BESCHREIBUNGEN, SIND NUR MASSGEBEND UND NICHT VERBINDLICH. D-994-A2 REVISIONE 00

CL 043

